

Introducing: Lyra™ 3-in-1 Binding Centre



YOUR DOCUMENTS, YOUR WAY



3-in-1 Binding Centre™

 Bind  Staple  2 & 4 Hole Punch



EasyPress™

Patented double-action stapler for low-effort stapling of up to 30 pages. Depth adjuster for customised, perfect results



Perfect Align

Easy alignment for accurate punching and stapling for perfect results.



Quick Load

Bind faster with vertical loading and directly placing document on comb - one simple motion

Low Force **Stapling**



EasyPress™

Patented double-action stapler for low-effort stapling of up to 30 pages. Depth adjuster for customised, perfect results.



Easy, Accurate **Alignment**



Perfect Align

Easy alignment for accurate punching and stapling for perfect results

Punch Edge Guide



Stapler Depth Guide



Easy, Accurate Loading



Quick Load

Punch & Bind faster with vertical loading and directly placing document on comb - one simple motion



Comb Binding

Same punch lever for binding punch and hole punch



2 & 4 Hole Punch

One Machine - 3 Solutions



Same Fellowes Promise

Robust Engineering

Intuitive Design

Unbeatable Quality



Fellowes

LX SERIES

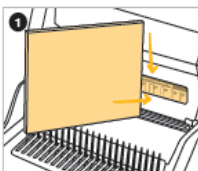


Lyra™ Quick Start Guide

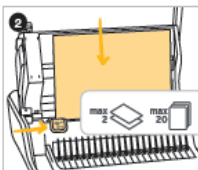
Fellowes

3-in-1 Binding™ Centre
 ① Bind ② Staple ③ 2 & 4 Hole Punch

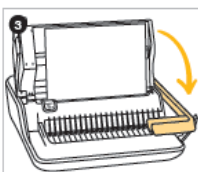
① BIND | RELIER | ENCUADERNADORA | BINDEN | RILEGA



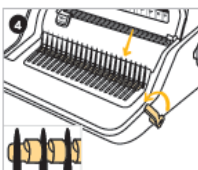
- > Measure documents and select comb.
- > Mesurez le document et sélectionnez la taille d'anneau nécessaire.
- > Mide el documento y selecciona el tamaño adecuado del canutillo.
- > Dokumentenstärke messen und passenden Binderücken auswählen.
- > Misura il documento e scegli il dorso.



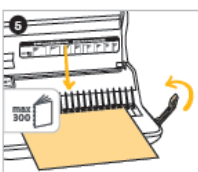
- > Adjust guide and load documents.
- > Ajustez le guide et chargez les documents.
- > Ajusta la guía y coloca el documento.
- > Einstellung anpassen und Dokument einlegen.
- > Regola la guida e carica i documenti.



- > Punch pages by pulling handle down.
- > Percez les feuilles en baissant la poignée.
- > Perfora las páginas bajando la palanca.
- > Blätter stanzen indem Sie den Hebel herunterdrücken.
- > Perfora i fogli abbassando la maniglia.



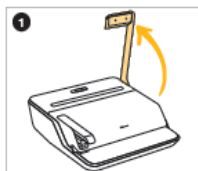
- > Insert comb and open with lever.
- > Insérez l'anneau et ouvrez-le avec le levier.
- > Inserta el canutillo y ábrelo con la palanca.
- > Binderücken einlegen und mit seitlichem Hebel öffnen.
- > Inserisci il dorso ed aprilo con la leva.



- > Load documents on comb and close with lever.
- > Chargez les documents dans l'anneau et fermez-le avec le levier.
- > Carica i documenti nel dorso e chiudi con la leva.
- > Dokument in Binderücken einlegen und mit seitlichem Hebel wieder schließen.
- > Carica i documenti nel dorso e chiudi con la leva.

③

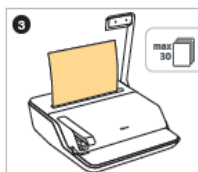
2 & 4 HOLE PUNCH | PERFORATEUR 2 & 4 TROUS | PERFORADORA DE 2 & 4 AHUJEROS | 2 & 4 FACH LOCHUNG | PERFORAZIONE 2 & 4 FORI



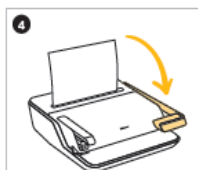
- > Lift handle upward.
- > Soulevez la poignée vers le haut.
- > Levanta la palanca hacia arriba.
- > Hebel aufstellen.
- > Solleva la maniglia.



- > Choose 2 or 4 hole punch.
- > Choisissez le poinçon à 2 ou 4 trous.
- > Elige entre 2 o 4 ahujeros.
- > Wählen Sie 2- oder 4-fach Lochung.
- > Scegli tra 2 o 4 fori.



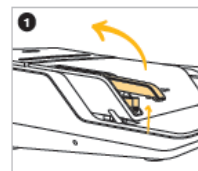
- > Insert paper and align paper: A4 left or A5 within guidelines.
- > Insérez le papier et alignez celui-ci: A4 à gauche ou A5 à l'intérieur des lignes directrices.
- > Coloca el papel alineado: A4 a la izquierda o A5 dentro de las guías.
- > Papier einlegen und ausrichten: A4 linksbündig oder A5 nach Markierung.
- > Inserisci ed allinea la carta: A4 a sinistra o A5 entro le linee guida.



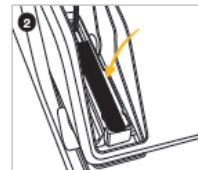
- > Punch pages by pulling handle down.
- > Perforez le papier en baissant la poignée.
- > Perfora apretando la palanca hacia abajo.
- > Papier lochen indem Sie den Hebel herunterdrücken.
- > Perfora la carta abbassando la maniglia.

②

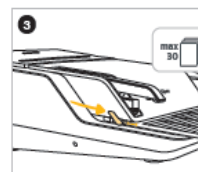
STAPLE | AGRAFEUSE | GRAPADORA | HEFTEN | CUCITRICE



- > Push button to open stapler.
- > Appuyez sur le bouton pour ouvrir l'agrafeuse.
- > Presiona el botón para abrir la grapadora.
- > Drücken Sie den Knopf um den Hefter zu öffnen.
- > Premi il pulsante per aprire la cucitrice.



- > Load staples.
- > Chargez les agrafes.
- > Carga las grapas.
- > Legen Sie die Heftklammern ein.
- > Carica i punti metallici.



- > Select desired depth.
- > Sélectionnez la profondeur souhaitée.
- > Selecciona la profundidad.
- > Wählen Sie die gewünschte Tiefe.
- > Seleziona la profondità desiderata.

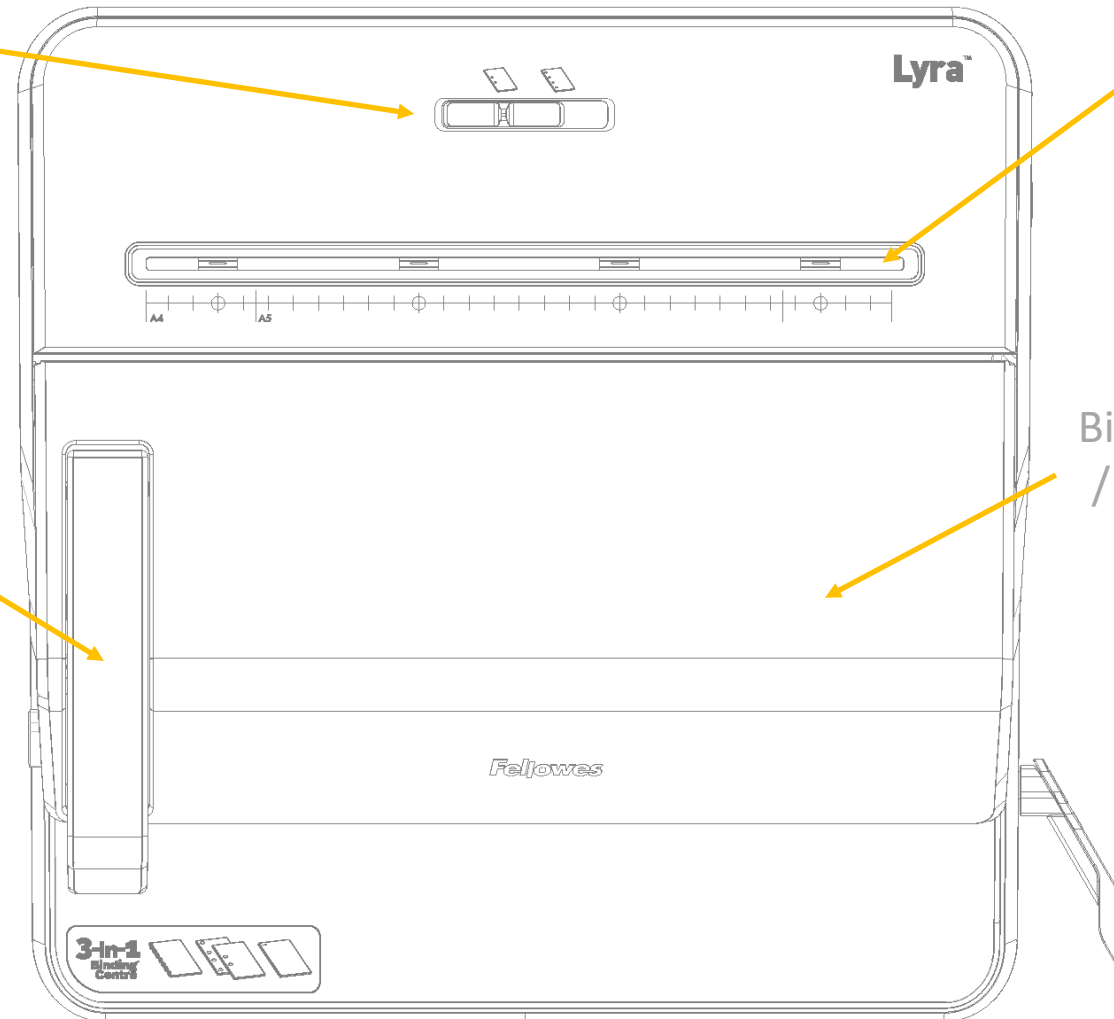
Lyra™ product overview

2 & 4 hole punch selector

2 & 4 hole punch (vertical loading)

Stapler

Binding lid lifts up as with Pulsar / Quasar manual comb binders



Lyra™ binding detail

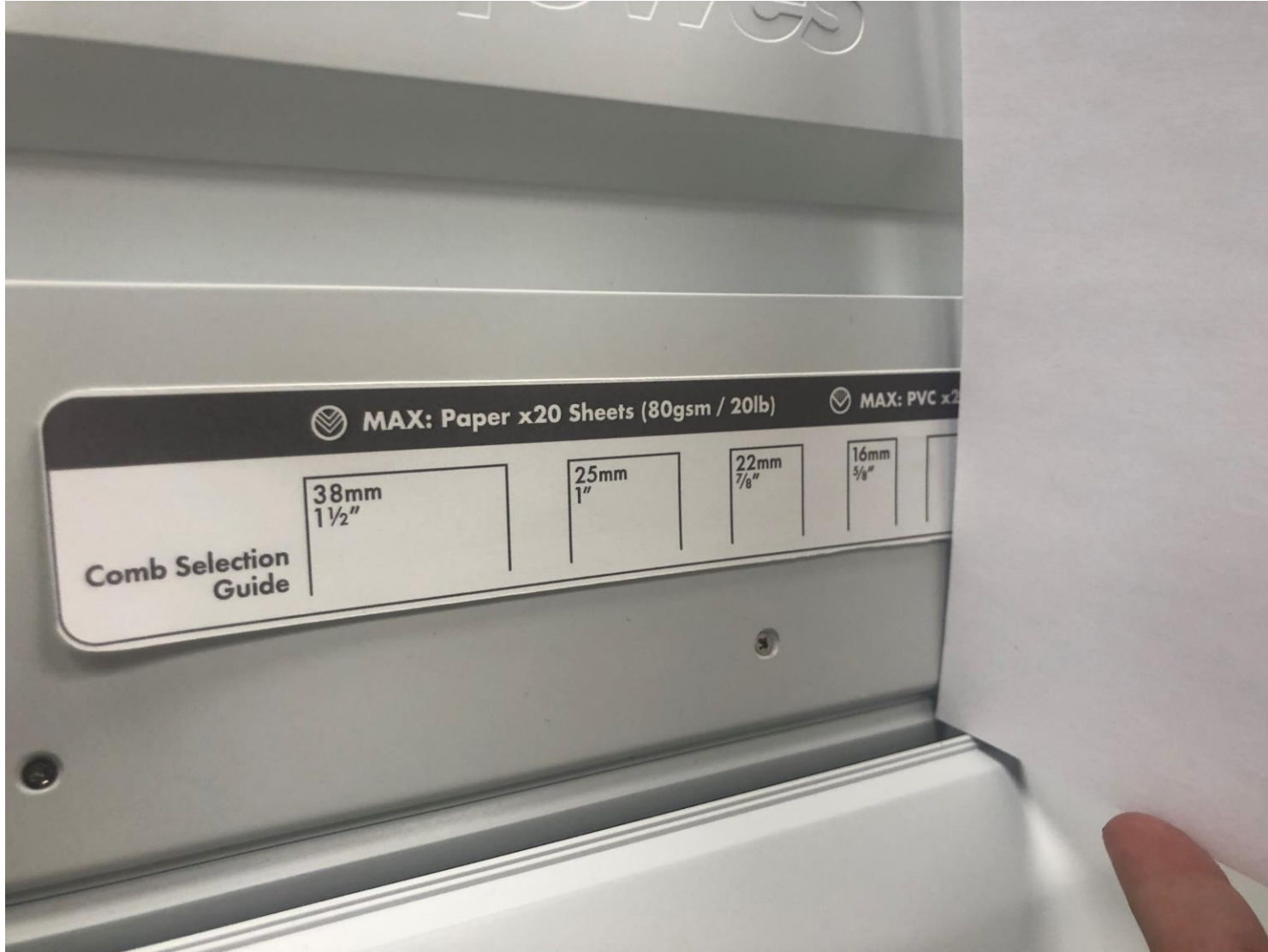
A4 / A5 binding
edge guide selector

Document and
Comb Selector

Document loading
(binding)



Lyra™ comb & document selector



Comb and document selector will be done visually using the attached guide to match the document size with the appropriate binding comb

Chip Tray will be retained as per current comb binders

Lyra™ hole punch detail

Paper loaded for
hole punching



Lyra™ hole punch detail



A4 and A5 guides for 2 and 4 hole punch option

3 x 80mm gaps between holes – European standard

2 / 4 hole punch selector will engage or disengage end holes.

Silkscreen selector guide to align A4 or A5 portrait punching

Lyra™ Stapler depth guide

Staple depth
guide



Compatible with 24/6 and 26/6 size
staples

Double action, low effort stapler

