

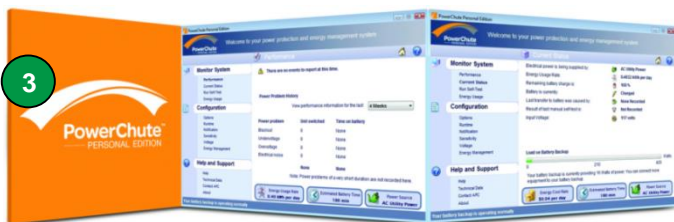
# APC Back-UPS 350 / 500 / 650

BK350EI, BK500EI, BK600EI

APC's Back-UPS 350EI, 500EI and 650EI offer guaranteed power protection for computers and other electronics in your home or business. Models provide enough battery backup power so you can work through short length power outages as well as safeguard your equipment from damaging surges and spikes that travel along utility and data lines. Together with a variety of standard features, APC's Back-UPS 350EI, 500EI and 650EI are perfect choices to protect your productivity from the constant threat of bad power and lost data.

## Product applications:

PC  
CCTV  
POS Equipment  
Projector with impulse power



## Product Features:

- 1 LED Indicator and Audible Alarms**  
Quickly understand the unit and power status through visual and audible indicators.
- 2 4 IEC Outlets**
  - **3 battery backup and surge protection**  
Keep critical electronic equipment running when the power goes out or fluctuates at dangerous levels, so you can protect your work and save your data.
  - **1 surge protection only**  
Protect your secondary electronics from harmful surges and spikes without reducing battery capacity used to run primary electronics during power outages.
- 3 USB /Serial Connectivity and PowerChute Software**  
Use your computer to access additional power protection and management features:
  - Preserves your work, shuts down system during outages
  - Restarts your system, minimizing work disruptions
  - Enables customization of your Back-UPS settings
  - Monitors and displays power and battery status
- 4 Telephone Data Line Surge Protection**  
Guards against surges and spikes traveling over an analog phone line.
- 5 Push Button Circuit Breaker**  
Provides for easy recovery from circuit overloads and protects your fuse box and electronics from electrical damage.
- 6 Automatic Diagnostic Testing**  
Periodic battery self-test ensures early detection of a battery that needs to be replaced, ensuring your unit is ready when you need it.
- 7 2 Yr Warranty**  
APC offers a 2 year warranty with free technical phone and online support, providing customer peace of mind.

## Back-UPS BK350EI, BK500EI, BK650EI Specifications

| Model Number                               | BK 350EI  | BK500EI            | BK650EI       |
|--|---|--------------------|---------------|
| <b>Output</b>                              |   |                    |               |
| Output Capacity                            | 350VA / 210W  | 500 VA / 300W      | 650 VA / 400W |
| Output Voltage / Frequency<br>(On utility) | 230V / 47-63 Hz   |                    |               |
| Output Voltage / Frequency<br>(On battery) | 230V +/- 8%, 50 or 60 Hz +/- 1 Hz   |                    |               |
| Output Connections                         | 4 IEC 320 C13 outlets<br>(3 battery backup and surge protection, 1 surge protection only and 2 IEC Jumpers) |                    |               |
| Waveform Type                              | Stepped Approximation to Sine Wave  |                    |               |
| <b>Input</b>                               |   |                    |               |
| Input Voltage / Frequency                  | 230V / 47-63 Hz +/- 3 Hz  |                    |               |
| Input Connection                           | 1.2M power cable<br>IEC-320-C14   |                    |               |
| <b>Surge Protection</b>                    |   |                    |               |
| AC Power Surge Protection                  | All outlets   |                    |               |
| Data Line Surge Protection                 | (2) RJ-45 phone/fax/modem/DSL   |                    |               |
| <b>Physical</b>                            |   |                    |               |
| Unit Dimensions (H x W x D)                | 165 x 91 x 284 mm   |                    |               |
| Unit Weight                                | 6.32 kg   | 6.03 kg            |               |
| Shipping Dimensions<br>(H x W x D)         | 178 x 241 x 368 mm  | 494 x 185 x 415 mm |               |
| Shipping Weight                            | 7.05 kg   | 7.31 kg            |               |
| Color                                      | White   |                    |               |
| UPC Code                                   | 731304016342  | 731304016359       | 731304219781  |
| <b>Battery</b>                             |   |                    |               |
| Battery Type                               | Maintenance-free, sealed lead-acid battery, leak proof  |                    |               |
| Battery Size                               | 12 Volt, 7Ah  | 12 Volt, 9 Ah      |               |
| <b>Management</b>                          |   |                    |               |
| Alarms                                     | Visual (LED) and audible alarms   |                    |               |
| Warranty                                   | 2 years repair or replace   |                    |               |
| Auto-Shutdown Software                     | PowerChute Personal Edition   |                    |               |

**APC by Schneider Electric**

132 Fairgrounds Rd  
West Kingston, RI 02892

[www.apc.com](http://www.apc.com)

